



# Status and Preview 2025 Urban Water Management Plan

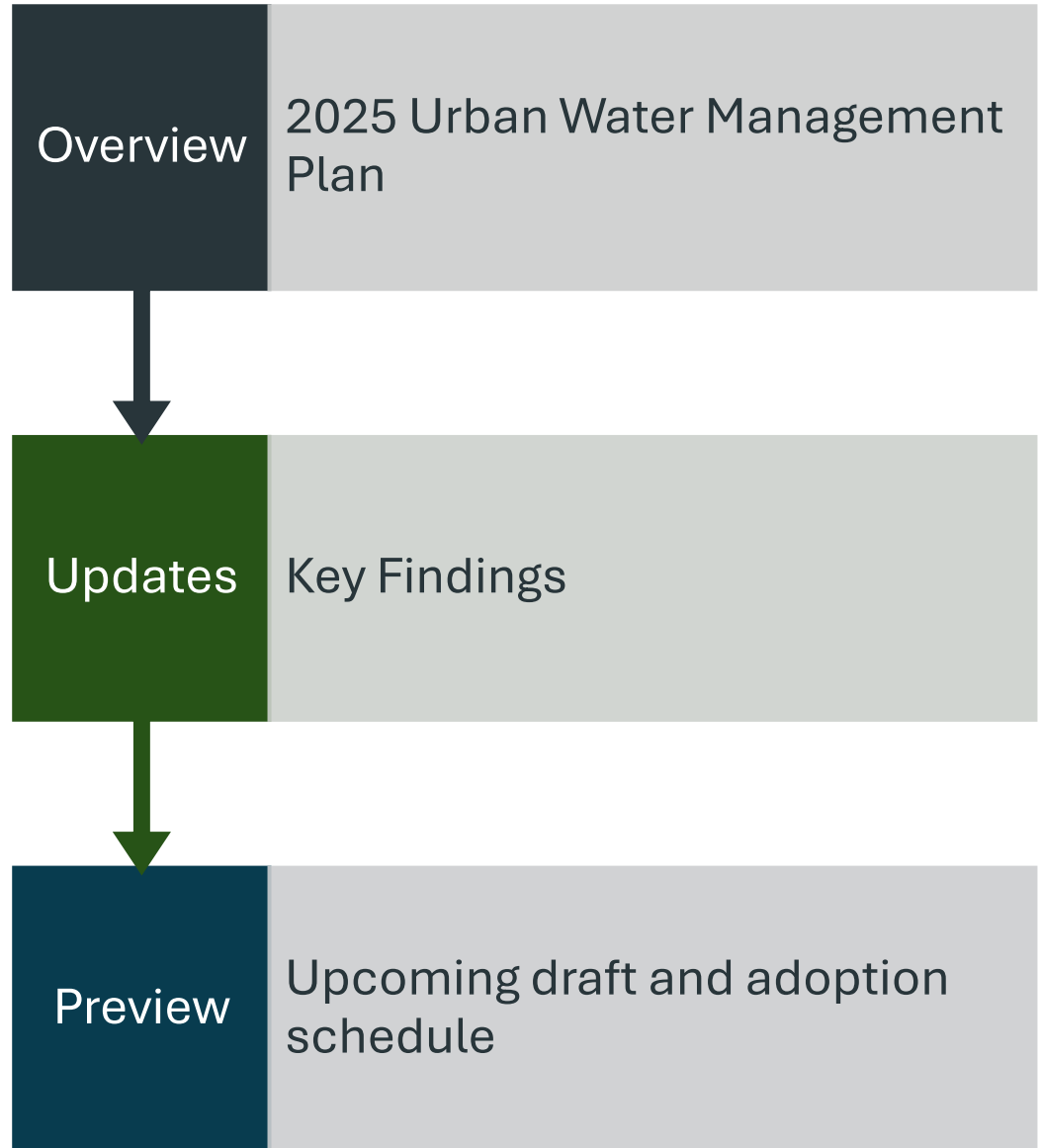
**Town of Discovery Bay CSD  
Water/Wastewater Committee**

**May 6, 2026**



**Shobe Engineering**  
Resilient and Efficient Solutions

# Purpose and Outcome Today



# UWMP Overview

---

Mandated by CA Water Code to be submitted to DWR every 5 years. Due July 1, 2026

---

Provides water supply and demand projections over a 25-year horizon

---

Evaluates reliability under drought conditions

---

DWR Guidebook has standard reporting tables and requirements

---

LAFCO & County planners rely on the UWMP for development project approvals

---

Maintains Eligibility for certain State loan/grants

# Schedule for Adoption

<b>Date</b>	<b>Milestone / Action</b>
May 6	Committee update
May 20	Public draft release for 2-week public review
May 20 & May 27	Newspaper notices
June 3	Public Hearing followed by Adoption (if no significant changes are needed)
Before July 1	Submittal to DWR

# UWMP Chapters

---

Chapter 1: Introduction and Lay Description

---

Chapter 2: Plan Preparation and Adoption

---

Chapter 3: Service Area Description

---

Chapter 4: Water Use Characterization

---

Chapter 5: SBX7-7 Reporting

---

Chapter 6: Water Supply Characterization

---

Chapter 7: Water Service Reliability & Drought Risk  
Assessment

---

Chapter 8: Water Shortage Contingency Plan

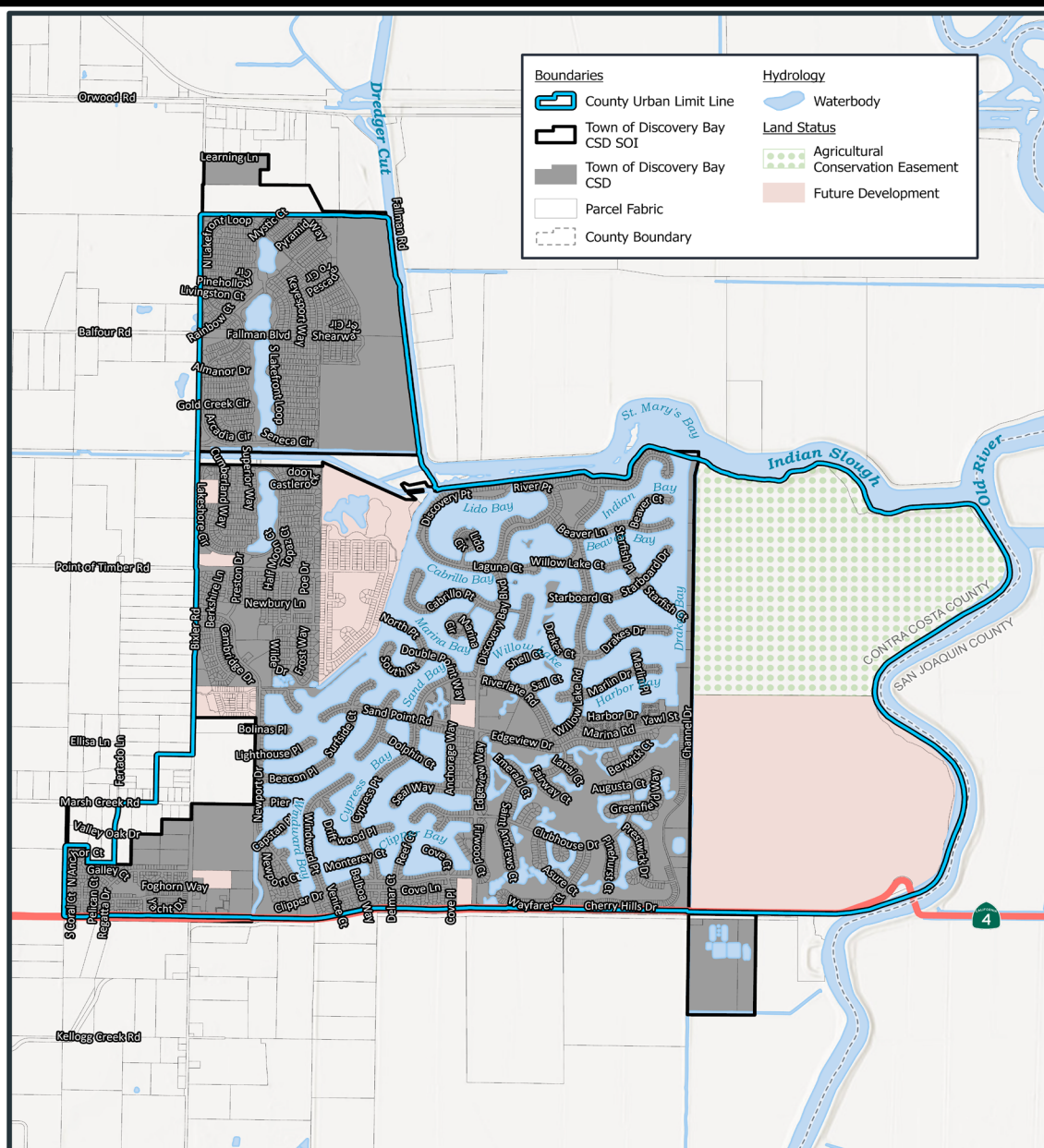
---

Chapter 9: Demand Management Measures



# What's New Since 2020

- Updated population and demand projections (2025 – 2050)
  - Updated Water Shortage Contingency Plan (adopted March 4, 2026)
  - Informed by ECC Subbasin Groundwater Sustainability Plan (2022)
  - Reporting updates from new regulations:
    - Water Loss Standards (SB 555)
    - Water Use Objectives (SB 606)
-



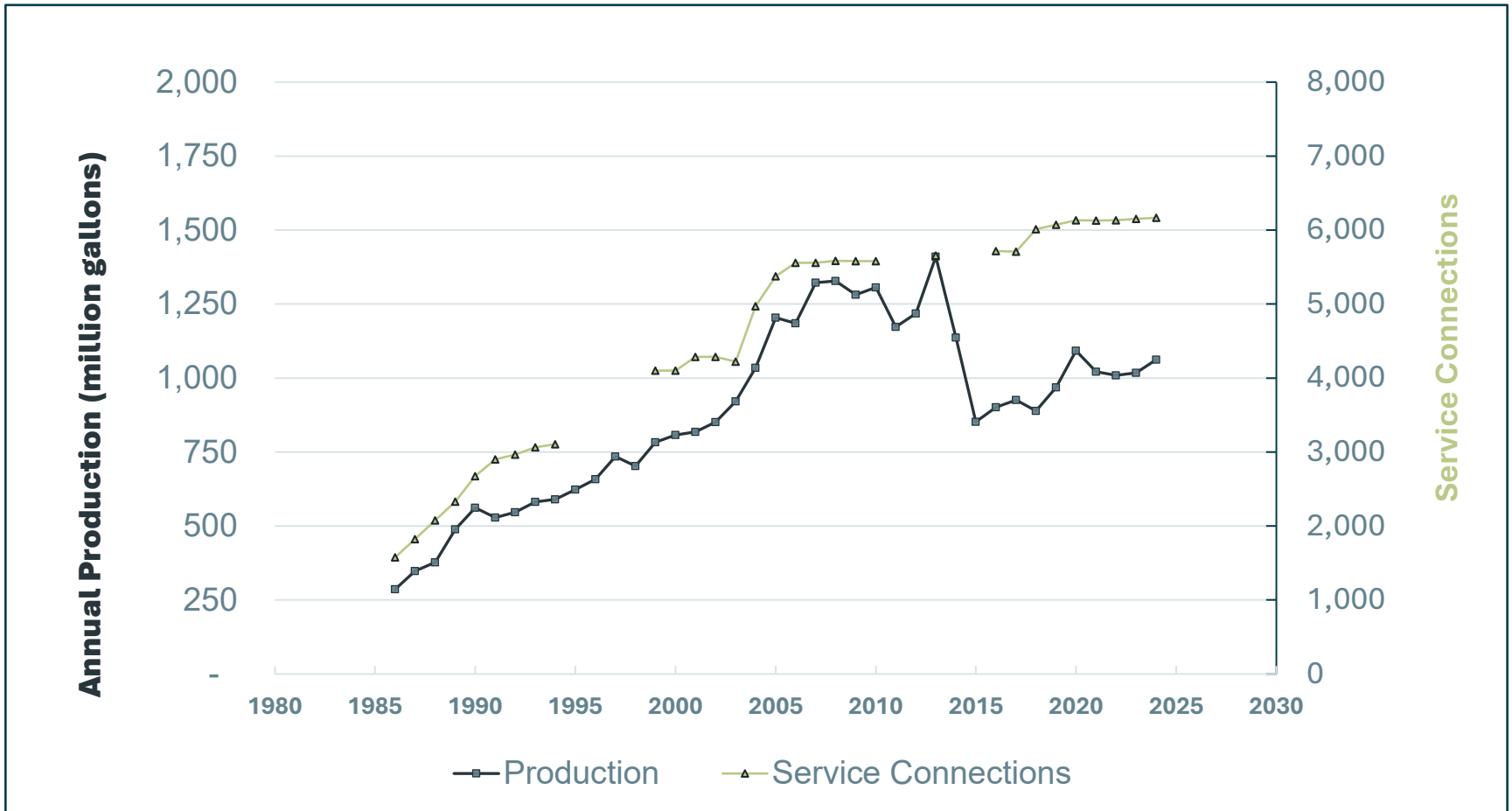
# Service Area & Growth

- Mostly built-out community
- Some Infill remains
- Future – Cecchini Ranch (assumed 2035)
- Long-term growth assumptions beyond 2035 (historic average)

NAD 1983 2011 StatePlane California III FIPS 0403 Ft US  
 0 0.25 0.5 1 Mile

Figure 3-1

# Historic Production and Connections



# Population & Demand Projections

\*Presented to Water/Wastewater Committee (Nov 5, 2025)

## Population Estimates (DWR Table 3-1R)

Population Served	2025	2030	2035	2040	2045	2050 (opt)
	15,865	18,556	23,923	27,991	32,751	38,321

## Projected Water Demand – *Million Gallons* (DWR Table 4-2R)

Use Type	2025	2030	2035	2040	2045	2050
Residential (Single Family & Multi Family)	668	840	1,076	1,259	1,473	1,723
Commercial / Institutional	16	19	57	67	79	92
Landscape	171	190	194	227	266	311
Distribution System Water Loss	159	151	191	224	262	306
<b>Total Potable</b>	1,014	1,200	1,518	1,777	2,080	2,432



# Water Supply Overview

- Groundwater System
  - Infrastructure Reliable Capacity – *daily flow*
    - Current = 6 MGD
    - After Well 8 is online = 8 MGD
  - ECC Subbasin Supply (GSP) – *annual*
    - Projected to be sustainable under various future scenarios including climate change
    - Basin sustainable yield 72,000 AFY
    - TODB estimated supply 7,500 AFY (currently uses 3,000 AFY)
-



# Annual Supply vs Demand

- Demand Growth
    - 1,014 MG (2025) to ~2,400 MG (2050)
    - Does not account for future water reductions/savings
  - Available Supply
    - 2,500 MG (same as 2020 UWMP)
  - Adequate supplies available to meet projected demand
  - No impact to supply during normal, single dry, or multiple-dry years
-



# Water Loss & State Regulations

- SWRCB has established
    - Water Loss Standard (SB 555) – *water audits, water losses*
    - Water Use Objectives (SB 666) – *indoor 55 gpcd*
    - Not enforced through UWMP, but progress is reported
    - Enforcement begins 2028, compliance tracking 2025-2027
  - TODB
    - Conducting annual water loss audits
    - State assigned Real Water Loss standard for each supplier
    - TODB standard: 13.9 gallons per SC per day (gpscd)
    - Most recent audit: 63.2 gpscd (varies year to year)
    - Evaluating water loss reporting and future savings
-

# Key Takeaways

- The 2025 UWMP confirms adequate supplies
- Growth and demand assumptions are conservative
- Groundwater remains a reliable supply
- Plan is consistent with State requirements

# Next Steps

- Public draft May 20
- Public hearing June 3 (Board meeting)
- Adoption by Board resolution
- Submit to DWR by July 1

Thank You